

CULTURE



THE GRAND LUAU AT HONUA'ULA

Monday, Tuesday, Thursday, Friday, and Saturday* | ext. 51

Enjoy the magical enchantment of Honua'ula. Meet Pele, the goddess of fire, and Kananaka, the mermaid of Maui, and step back into a journey filled with traditional chants and hula bringing the history of our island home to life. *Dates subject to change. Advance reservations required. Check in at 4pm, pre-show begins at 5pm.

MONDAY

11:00am Ti-Leaf Lei Making

1:00pm Lauhala Weaving

TUESDAY

10:00am Art Tour

11:00am 'Ukulele

1:00pm Kukui Nut Bracelet

WEDNESDAY

11:00am Cultural Tour

1:00pm Coconut Husking Demo

THURSDAY

9:00am Botanical Tour

11:00am Hula

1:00pm Ti-Leaf Lei Making

FRIDAY

10:00am Art Tour

11:00am Lauhala Weaving

1:00pm 'Ukulele

ART TOUR* Meet in front of the Makana Gift Shop

Grand Wailea is home to the largest corporate art collection in the state of Hawaii. Explore the grounds with Curator Michael Gilbert as you encounter great works by Hawaii's "Living Treasures" - artist Satoru Abe, Herb Kawainui Kane and Maui's Shige Yamada.

BOTANICAL TOUR* Meet at the Concierge Desk.

Tour the property with Grand Wailea's Director of Landscaping, Jim Heid, as he speaks of the native Hawaiian flowers, plants, and fruits on property and their significance to the island.

COCONUT HUSKING* Meet at Camp Grande

Watch as our team husks the coconut while speaking of the diversified uses this special tree offers.

CULTURAL TOUR* Meet at the Mermaid Fountain.

Learn about Hawaiian history, culture, medicine, and traditions with a Grand Wailea Hawaiian Cultural Ambassador as you tour cultural sites around the property.

HULA* Meet at Camp Grande

Dance your way thru the morning as we share the history, traditions, and learn the basic steps of hula.

KUKUI NUT BRACELET* Meet at Camp Grande

Chosen as the state tree, the Kukui can be used for a variety of purposes. Come hear about the trees uses and make a bracelet while doing so.

LAUHALA* Meet at Camp Grande

Sometimes used as a food source, you will learn to craft a keepsake from the leaf of the Pandanus tree.

TI-LEAF LEI MAKING* Meet at Camp Grande

Try your skills at this simple style of lei making called Hilo, using ti-leaf.

UKULELE* Meet at Camp Grande

As you listen to the history of the 'ukulele, join in on the fun and learn to play a few chords on the 'ukulele.

*Complimentary activities and tours for all guests. Subject to change without notice. Sunscreen and hat recommended for tours.

SUNSET TORCH LIGHTING

Sunset Nightly at Botero Lounge

Nightly Hawaiian chant and blowing of conch. Torch lighting to continue to HumuHumu restaurant and on to Bistro Molokini with the setting of the sun.



EAT & DRINK

GRAND DINING ROOM MAUI

Sunrise Family Buffet & A la Carte Menu
Monday - Saturday 7am - 10:30am
Sunday 7am - 10am
Sunday Brunch 11am - 1pm
Upgrade your buffet with endless sparkling wine
\$12 (glass value \$14).

CAFÉ KULA

Daily 5:30am - 9pm
Breakfast 5:30am - 11am
Lunch & Dinner 11am - 9pm

VOLCANO BAR & GRILL

Bar 10am - 5pm
Lunch 11am - 4pm

GROTTO BAR

Swim-up bar for ages 21+ years
Daily 10:30am - 5pm
Lunch 11am - 4pm

BISTRO MOLOKINI

Sunday Football* 7am - 11am *Starting September 8th
Wood Fired bar brunch menu at the Bistro Bar

Bar 10am - 9pm
Daily 11am - 5:30pm
Happy Hour 5pm - 6pm
Dinner 5:30pm - 9pm
Keiki receive a complimentary Grand Wailea plush toy with purchase of a dinner entrée. (children ages 12 and under).

HUMUHUMU

Humu Lounge 5pm - 10pm
Dinner 5pm - 9:30pm
Keiki receive a complimentary Grand Wailea plush toy with purchase of a dinner entrée. Entrée includes choice of island sorbet or ice cream (children ages 12 and under).

BOTERO LOUNGE

Daily 2pm - Midnight (last call 11:30 pm)
Sushi by Chef Tadashi 5pm - 9pm
Sunset Nightly Torch Lighting
Live Entertainment 6pm - 9pm



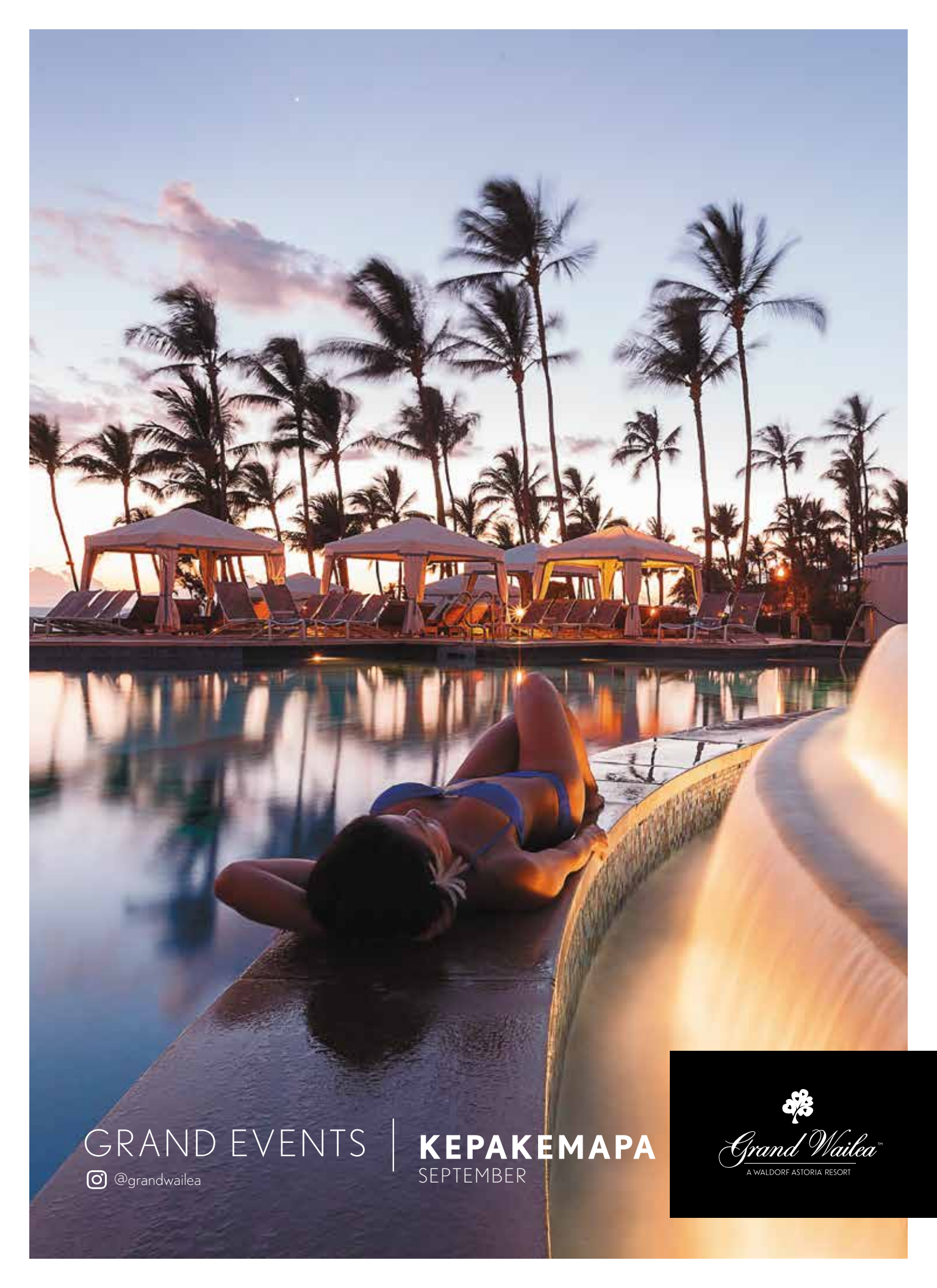
RESTAURANT RESERVATIONS DESK:

Sunday - Wednesday 10am - 6pm | Thursday - Saturday 8am - 8pm | ext. 2500
gwrestaurantreservations@waldorfastoria.com
Menus www.grandwailea.com/dine


*Restaurant hours of operation are subject to change without notice.

HAWAII, MAUI STATE LIQUOR LAW:

Hawaii State Liquor Law requires a person to be at least 21 years of age to purchase or consume alcohol. All patrons will be asked to present identification prior to being served alcohol at any of the resort's outlets. Outside alcoholic beverages are prohibited on the pool deck and activity areas. Grand Wailea reserves the right to refuse alcohol service to any patron without proper identification or thought to be visibly impaired.



GRAND EVENTS

 @grandwailea

KEPAKEMAPA

SEPTEMBER



Grand Wailea[™]

A WALDORF ASTORIA RESORT

SIGNATURE EXPERIENCES



elite
MEMBER
GRAND WAILEA
A WALDORF ASTORIA RESORT

ELITE MEMBERSHIP

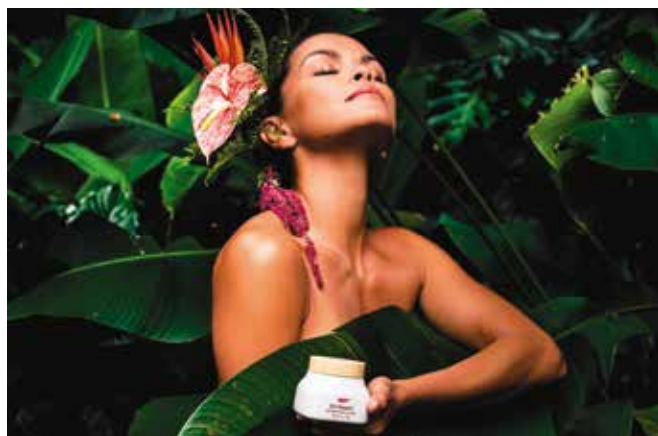
Open Daily 8am - 5pm | ext. 4392

Discover Elite Membership, the Grand Wailea frequent guest program.

Benefits to include:

- Hilton Honors Gold Status
- Preferred member guest room rates.
- Savings on dining, spa and salon services, and select retail.
- Exclusive promotions for Grand Wailea and sister properties Arizona Biltmore and La Quinta Resort.

Learn more and visit us. 4th floor among the Grand Wailea Shops.



HAWAIIAN SUPERFOOD CRYSTAL FACIAL

Spa Grande | Open Daily 8am - 7pm | ext. 4949

Experience holistic beauty from the heart of Hawaii. This potent collagen-producing facial uses O'o Hawaii's clinical grade formulas to deeply infuse the skin with pristine nutrients, rapidly reversing the effect of sun damage and environmental factors, while visibly tightening and brightening for an immediate "plump and glow" effect. Includes a rose quartz gua sha massage of the face and neck to increase lymphatic drainage and tone the skin. 50 minute \$200 | 100 minute \$350 + gift with service.



PACIFIC DREAM PHOTOGRAPHY | ext. 4477

Capture the moments of your stay at Grand Wailea.

Complimentary 45-minute beach portrait session for Grand Wailea guests.

Advance reservations required. Studio located in Grand Wailea Shops.

Email gwr@pacificdreamphotography.com or visit our concierge.

www.pacificdreamphotography.com for more information and packages.

OUTDOOR PHOTOGRAPHY CLASS

Wednesday and Friday 8:30am - 12pm

\$40 per person + \$25 materials fee. Meet in front of the Makana Gift Shop.

Perfect for aspiring or professional photographers of all ages. Includes class instruction, exploration of grounds and a printed 16 inch canvas of your best photo.

GRAND WAILEA SHOPS Located 4th floor lobby level

MAKANA - Gifts with Aloha	7am - 10pm
PINK LILIA - A Lilly Pulitzer Signature Store	8am - 8pm
PINEAPPLE PATCH - children attire & more	8am - 8pm
MEN'S AND WOMEN'S BOUTIQUE	8am - 8pm
CRUISE BOUTIQUE - swim-wear	8am - 8pm
QUIKSILVER	8am - 8pm
NA HOKU - jewelry	8am - 8:30pm
GRAND JEWELS OF WAILEA - jewelry	9:30am - 8pm
CHRISTOPHER EGAN GALLERY	8am - 10pm
KI'I GALLERY	9am - 8pm
GRAND IMAGE BOUTIQUE - spa & fitness	8am - 7pm

Located at Spa Grande

BEACH AND POOL SHOP 7am - 5pm

Located next to the Activity Pool Desk

AKAMAI BUSINESS CENTER Mon - Fri 8:30am - 4:30pm

ENTERPRISE RENTAL CAR 7:30am - 4pm

Located in the main lobby

ALL PLAY. ALL DAY.

POOLS

Open Daily 7am - 10pm | ext. 4579

Registered guests are required to wear a daily pool wristband to access pools and amenities.

Daily wristbands and towels are available at the Activity Pool Desk, Hibiscus Pool and Beach Cart.

For beach chairs and umbrella set-up please check-in at the Beach Cart.

Reserving or holding chairs is not permitted. Towels and items left before 7am or unattended for 60 minutes will be removed and taken to the poolside security cabinet, allowing other guests the opportunity to use a chair.

CABANAS & CASABELLAS

Daily Rentals 7am - 6pm | ext. 4579

Reservations available online at www.grandwailea.ipoolside.com or the Activity Pool desk.



THE ROCK - CAMP GRANDE

Open Daily 9am - 4pm. Keiki (children) ages 5 - 17 years | ext. 4555

Fun for the whole family - sports lounge with TVs, snack bar and pool table.

Game room with an air hockey table and play-station. Dedicated Lego room and a movie theater. Children ages 13 years & under must be accompanied by a parent.

CAMP GRANDE

Keiki (children) camp for ages 5-12 years

Full-day or half-day camp for a nominal fee. Reservations required.

SUNDAY	Scavenger Hunt / Water Play
MONDAY	Hula Lessons & Lei Making / Water Play
TUESDAY	Tide Pool Exploration / Water Play
WEDNESDAY	Wilderness Day / Water Play
THURSDAY	Nature Escapade / Water Play
FRIDAY	Sand Sculpting and Volcanoes / Water Play
SATURDAY	Silly Saturday / Water Play



AQUALANI BEACH & OCEAN RECREATION

Open Daily 8am - 5pm | ext. 4257

Enjoy the day in the ocean. Rentals available by the hour for kayaks, snorkel equipment, paddle boards, boogie boards, and aqua gliders. Packages and tours also available. Located behind the beach cart along the beach walk. www.aqualanibeach.com

DIVE WAILEA

Open Daily 8am - 4pm | ext. 4590

Grand Wailea is the only resort with a designated SCUBA training pool in Hawaii. Learn basic equipment use, snorkeling techniques and reef education. Tailored ocean dives for novice or certified divers, rentals and PADI certification classes available for a nominal fee.

SNORKEL LESSON* **Daily 7:30am for 45 minutes.** Available to all ages.

TRY SCUBA* **Daily 9:30am and 1pm.** Must be age 8+ years.

*Complimentary for all guests. Sign-up required. Scuba pool located by the main Activity Pool.

FITNESS & WELLNESS

SPA GRANDE & GRAND SALON **Open Daily 8am - 7pm | ext. 4949**

Acclaimed Forbes Four Star Spa - Spa Grande offers an array of treatments and services along with the luxurious Healing Waters of Maui™ Hydrotherapy Terme.

FITNESS CLASSES \$15 per class. Sign-up 15 minutes prior to class at the Spa Grande lobby desk. Classes meet at the Aerobics Studio located ground level - Chapel-side spa entrance. Beach Yoga and Morning Meditation are complimentary to Grand Wailea guests, see description for meeting location and time..

SUNDAY

7:00am Morning Meditation
7:30am Flow Yoga
8:30am Group Cycle
9:30am Core Fit

MONDAY

7:00am Beach Yoga
8:30am Group Cycle
9:30am Grand Sculpt
3:00pm Round-Robin Basketball

TUESDAY

7:00am Beach Yoga
7:30am Circuit Challenge
8:30am Group Cycle
9:30am Mat Pilates

WEDNESDAY

7:00am Beach Yoga
8:30am Group Cycle
9:30am Barre
3:00pm Round-Robin Racquetball

THURSDAY

5:45am E Ala E (September 19th)
7:00am Beach Yoga
8:30am Group Cycle
9:30am Mat Pilates
3:00pm Round-Robin Basketball

FRIDAY

7:00am Beach Yoga
8:30am Group Cycle
9:30am Core Fit
3:00pm Round-Robin Racquetball

SATURDAY

7:00am Beach Yoga
7:30am Beach Bootcamp
8:30am Group Cycle
9:30am Circuit Challenge

BARRE (50 minutes)

Combination of ballet barre work and floor exercises using light weight to increase muscular tone and endurance.

BEACH BOOTCAMP (50 minutes)

Fun, challenging workout combining sports conditioning and cardio on the beach.

BEACH YOGA (60 minutes)

Complimentary for Grand Wailea guests. Welcome the beautiful Maui morning with an easy and energizing Yoga session on the beach. Meet at the Chapel entrance of Wailea Beach at 6:45 am.

E ALA E SUNRISE EXPERIENCE

Thursday, September 19th at 5:45 am

A rejuvenating and inspiring wellness experience as guests learn a simple Hawaiian oli (chant) and enter the ocean to release the past and all of life's stresses. Emerging from the ocean renewed, welcome the rising sun with a rousing "E Ala E" chant that creates life energy for the day ahead. Meet at Wailea Beach in front of the Seaside Chapel. Complimentary to all guests.

CIRCUIT CHALLENGE (50 minutes)

Bring out your inner athlete in this sports oriented indoor circuit. Strength conditioning, cardio, and balance are all included in this intense yet fun workout. Level 2-3.

CORE FIT (50 minutes)

Mind-Body class focused on increasing balance, core strength, flexibility and overall body awareness.

FLOW YOGA (50 minutes)

Vigorous and energetic yoga designed to build strength and flexibility. Previous yoga experience recommended.

GRAND SCULPT (50 minutes)

A muscular endurance and conditioning class focusing on upper body exercises with a built-in cardio session.

GROUP CYCLE (50 minutes)

Turn your cycling up to 11 with a music-fueled indoor ride. Bike to the beat in a workout tailored to take you on a journey that's as challenging as it is thrilling.

MAT PILATES (50 minutes)

Improve balance and coordination, keep your spine and muscles flexible, and strengthen and lengthen without adding bulk to your frame.

MORNING MEDITATION (30 minutes)

Complimentary for Grand Wailea guests. A journey concentrated on focusing upon a sound, object, visualization, the breath, movement, or attention itself. Meet at the Seaside Chapel at 6:45 am.

ROUND ROBIN RACQUETBALL or ROUND ROBIN BASKETBALL (120 minutes)

All ages and experience levels welcome.

